

TEDI0200-45

Rev A Sept 2010
PRELIMINARY



BENEFITS



45dB Dynamic Range

USB interface

9.3GHz to 10.2GHz

FEATURES



True RMS Accuracy

PC Software supported

0.5dB Accuracy

Max input +20dBm

DESCRIPTION

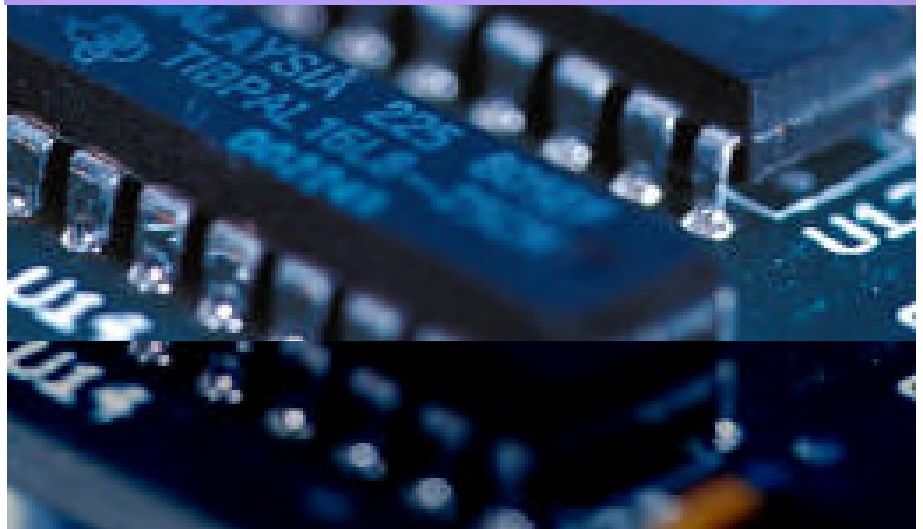


The TEDI0200-45 is a Laboratory-quality, True RMS power meter with USB interface. The RF power is measured using a IC log detector and provides accurate RMS power over a 45 dB dynamic range. The device is powered from the USB interface and the power is read by a free utility running on any XP or Vista PC.

The TEDI0200-45 is the smallest USB power meter available and is also priced significantly below the current market offerings.

Applications include basic power measurement but also data logging for life test or system performance monitoring were the device needs to be left unattended for long periods. The optional HUB allows the TEDI0200-45 to continue to make measurements after the host PC is removed from the system.

The TEDI0200-45 also contains 0.5GB of flash memory used for calibration tables but also available for file storage and data logging. All drivers, utilities and documentation are available on the TEDI0200-45 itself.



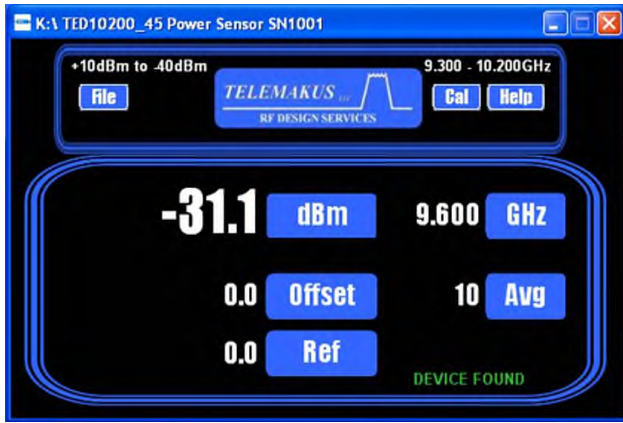
CALIBRATION



Calibration is performed at the factory and cal tables are loaded in Flash. Custom calibration tables can be loaded if greater accuracy is required at a specific frequency. No zeroing or cal standards required. Temperature correction is achieved using internal temperature sensor, also available to the user.

TELEMAKUS LLC

RF DESIGN SERVICES



TEDI4500-45 Rev A Sept 2010

Ordering information

Model	Frequency	Max Input	
TED6000-50	50MHz to 6GHz	+20dBm	
TEDI4500-45	14-14.5GHz	+20dBm	
TEDI0200-45	9.3-10.2GHz	+20dBm	

Specifications

Parameter	Specification
Freq Range	9.3GHz to 10.2GHz
Dynamic Range	45dB
Interface	USB 2.0
Current	250mA
Accuracy	+/-0.5dB
Sample Rate	10Hz
Spurious Output	-25dBm
RF Input Connector	SMA Male
USB Connector	Mini A



Environmental

Temperature Range	-40 to +55 degC		
Not Environmentally sealed			