



TEV2700-45 Rev A Aug 2010

BENEFITS

45dB Dynamic Range

USB 2.0 Interface

1.8-2.7GHz



FEATURES

Low Insertion Loss

PC Software Supported

12 bit, 360° Phase Range

Max Input +23dBm



DESCRIPTION



The TEV2700-45 is a Laboratory-quality, RF Vector Modulator with 45dB dynamic range and only 10dB insertion loss.

The TEA2700-45 is the smallest USB microwave Vector Modulator available and is priced significantly below the current market offerings.

Applications include RF cancellation, beam forming, signal modulation and amplitude/phase correction systems. Use of the optional HUB allows the Vector Modulator to remain in a given state even after the host PC is removed from the system.

The modulator contains 0.5GB of flash memory used for installation files, test data and other supporting documentation.

CALIBRATION

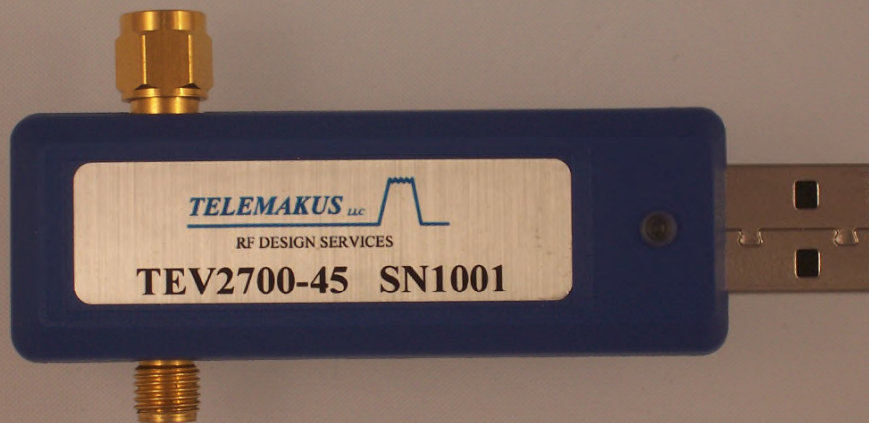


Each unit is calibrated at three frequencies for optimum performance. Additional calibration points can be added by the user.

TELEMAKUS LLC

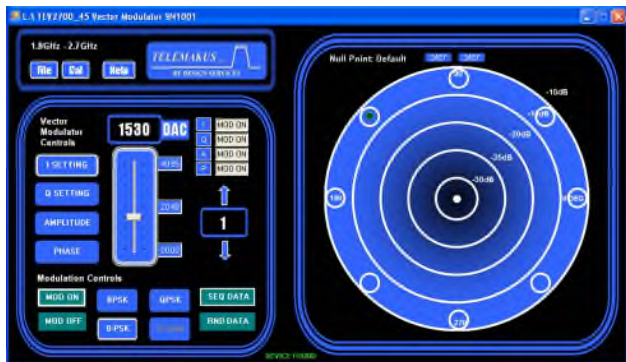


RF DESIGN SERVICES

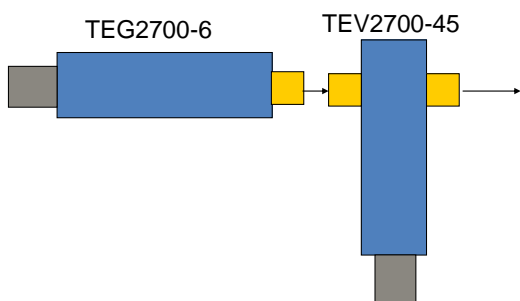


Phone: 916 458 6346
Fax: 916 983 8713
Email: mail@telemakus.com
www.telemakus.com

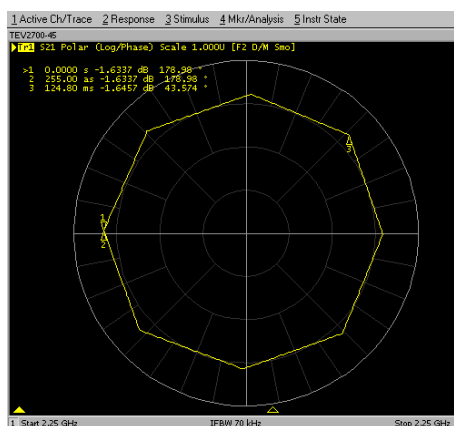
Primary Business Address
13405 Folsom Blvd #502
F O L S O M
C A , 9 5 6 3 0



Easy to use graphical interface with both numeric entry or slider controls. Hold down left mouse button to change gain and phase and then release to lock in new values. The GUI has additional controls for demonstrating carrier modulation in BPSK, QPSK and 8PSK at a fixed symbol rate of 500Hz.



Typical Configuration Modulated Signal Generator



8PSK

TELEMAKUS LLC

RF DESIGN SERVICES



TEV2700-45 RevA Aug 2010

Ordering information

Model	Frequency	Max Input	Min Loss
TEV2700-45	1.8-2.7GHz	+23dBm	-10dBm
TEV1000-50	0.7-1GHz	+23dBm	-10dBm

Specifications

Parameter	Specification
Freq Range	1.8-2.7GHz
Dynamic Range	45dB
Phase Range	360°
Interface	USB 2.0
Current	150mA @5V (from USB port)
Resolution	12bit
High Linearity	+33dBm IIP3
Input P IdB	14dBm
Min Insertion Loss	-10dB
Return Loss	-9dB typ
RF Connectors	SMA Male Input /Female Output
USB Connector	Mini A

Environmental

Temperature Range	-40 to +55 degC		
Not Environmentally Sealed			

Phone: 916 458 6346
 Fax: 916 983 8713
 Email: mail@telemakus.com
 www.telemakus.com

Primary Business Address
 13405 Folsom Blvd #502
 Folsom
 CA,95630