



TES7000-50 Rev A Oct 2011

BENEFITS

50dB Isolation @4GHz

USB interface

100MHz to 7GHz



FEATURES

Low Insertion Loss

Fast switching speed

Non-Reflective

Max Power Pulsed +29dBm



PC Software supported

DESCRIPTION



The TES7000-50 is a Laboratory-quality, RF SPDT Switch with 50dB isolation and only 3dB insertion loss at 4GHz. The switch is non-reflective.

The TES7000-50 is the smallest USB microwave switch available and is also priced significantly below the current market offerings.

The TES7000-50 has a pulse function selectable from a menu, the pulse width and period can be set from 250nS to 8.0S. Custom pulse configurations available from factory.

Connector configuration allows the switch to be easily cascaded with our other control products.

Applications include switching between two RF sources or loads and pulse modulation for amplifier testing.

The optional HUB allows the switch to remain in a given state even after the host PC is removed from the system.

The switch also contains 0.5GB of flash memory used for installation files, test data and other supporting documentation. Drivers, utilities and documentation are available on the switch itself.



CALIBRATION



Full results of factory test data are stored in each units flash memory and is available through the USB interface.

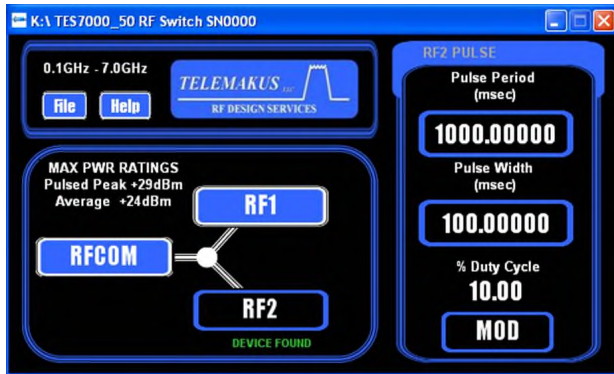
TELEMAKUS LLC



RF DESIGN SERVICES

Phone: 916 458 6346
Fax: 916 983 8713
Email: mail@telemakus.com
www.telemakus.com

Primary Business Address
13405 Folsom Blvd #502
F O L S O M
C A , 9 5 6 3 0



Easy to use graphic interface with push button controls

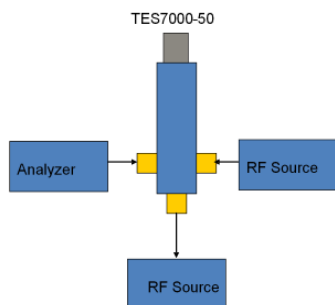


Fig 1 Switching between 2 sources

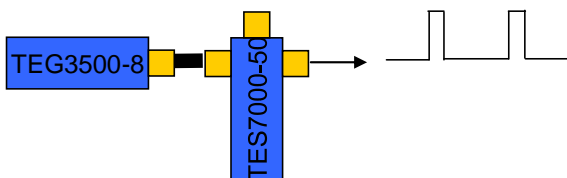


Fig 2. Pulse modulation

Typical Configurations



<div style="text-align: right;"> <h1 style="margin: 0;">TES7000-50</h1> Rev A Aug 11 </div>			
Ordering information			
Model	Frequency	Max Input	
TES7000-50	100MHz to 7GHz	+24dBm (CW)*	

* Internal terminations are limited to +24dBm Average power.

Specifications	
Parameter	Specification
Freq Range	100MHz to 7GHz
Isolation	50dB @ 4GHz
Interface	USB 2.0
Current	150mA @5V Vbus(USB)
High IP3	+49dBm @ 6GHz
Insertion Loss	<3dB
P0.1dB(pulsed)	33dBm
Max Switching Power (Pulsed)	29dBm
Max Average Power	+24dBm
Switching Time (10/90% RF)	33nS
Return Loss	-15dB @ 4GHz
Pulse Width/Period	250nS to 8.0S
RF Common Connector	SMA Male
RF1 and RF2 Connector	SMA Female
USB Connector	Mini A

Environmental			
Temperature Range	-40 to +55 degC		
Not Environmentally sealed			

Phone: 916 458 6346
 Fax: 916 983 8713
 Email: mail@telemakus.com
 www.telemakus.com

Primary Business Address
 13405 Folsom Blvd #502
 Folsom
 CA,95630