

TEP8000-6 Rev 2 Jun 2012

DESCRIPTION

The TEP8000-6 is a Laboratory-quality, RF Digital Phase Shifter with 360° Phase range and only 5dB typical insertion loss. The device operates from 4 to 8GHz and can be controlled with any Windows XP or 7 PC via USB with the simple GUI provided.

The TEP8000-6 is the smallest USB microwave phase shifter available and is priced significantly below the current market offerings.

Applications include dynamically controlling the phase of an RF signal. When combined with an attenuator such as the TEA8000-6, a gain and phase control system can be created.

The Phase Shifter contains 0.5GB of flash memory used for installation files, test data and other supporting documentation. Drivers, utilities and documentation are available on the phase shifter itself.

CALIBRATION

Full results of factory test data are stored in each units flash memory and available through the USB interface.

BENEFITS

360 Degrees Min Phase Range

USB 2.0 Interface

4GHz to 8GHz

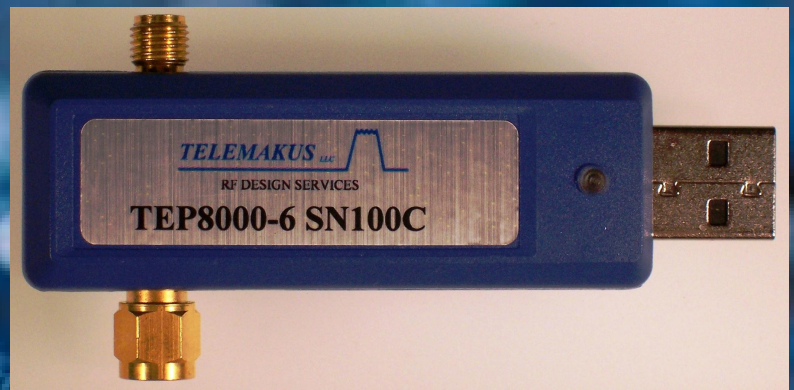
FEATURES

Low Insertion Loss

Window XP or 7 Supported

12 bit, 0.25 Degree Resolution

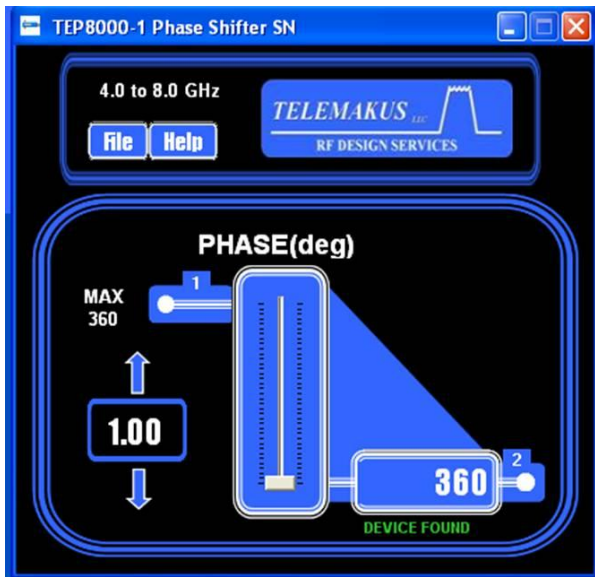
Max Input +20dBm



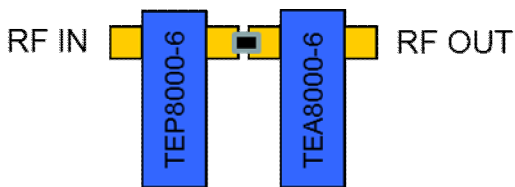
RF DESIGN SERVICES

Phone: 916 458 6346
 Fax: 916 983 8713
 Email: mail@telemakus.com
 www.telemakus.com

Primary Business Address
 13405 Folsom Blvd #502
 F O L S O M
 C A , 9 5 6 3 0



Easy to use graphical interface with both numeric entry or slider controls.



Typical Configuration
Gain/Phase Control

Ordering information

Model	Frequency	Phase Control Range Typ	Max Input
TEP8000-6	4 to 8 GHz	410 Deg	+20dBm
TEP4000-5	2 to 4 GHz	460 Deg	+20dBm
TEP12000-6	8 to 12 GHz	390 Deg	+20dBm
TEP18000-6	12 to 18 GHz	380 Deg	+20dBm
TEP24000-6	18 to 24 GHz	460 Deg	+20dBm

Specifications

Parameter	Specification
Frequency Range	4GHz to 8GHz
Phase Control Range	360 Degrees Min / 410 Degrees Typ
Interface	USB 2.0
Current	150mA (From USB interface)
Step Size	0.25 Degrees max / 0.1 Degrees Typ
Input IP3	+30dBm IIP3
Max input for linear operation	+10dBm
Insertion Loss	5dB Typ /6dB max @8GHz
RF Connectors	SMA Male/Female
USB Connector	Mini A

Environmental

Temperature Range	-40 to +55 degC		
Not Environmentally sealed			