

DESCRIPTION

The TEP2000-4 is a Laboratory-quality, RF Digital Phase Shifter with 360° Phase range and only 4dB typical insertion loss. The device operates from 1 to 2GHz and can be controlled with any Windows XP, 7 or 8 operating system via USB with the simple GUI provided.

The TEP2000-4 is the smallest USB microwave phase shifter available and is priced significantly below the current market offerings.

Applications include dynamically controlling the phase of an RF signal. When combined with an attenuator, such as the TEA4000-7, a gain and phase control system can be created.

The Phase Shifter contains 0.5GB of flash memory used for installation files, test data, drivers, documentation and user defined information.

CALIBRATION

Full results of factory test data are stored in each units flash memory and available through the USB interface.

TELEMAKUS LLC

RF DESIGN SERVICES

TEP2000-4 Rev A Dec 2013
Preliminary

BENEFITS

- 360 Degrees Min Phase Range
- USB 2.0 Interface
- 1GHz to 2GHz

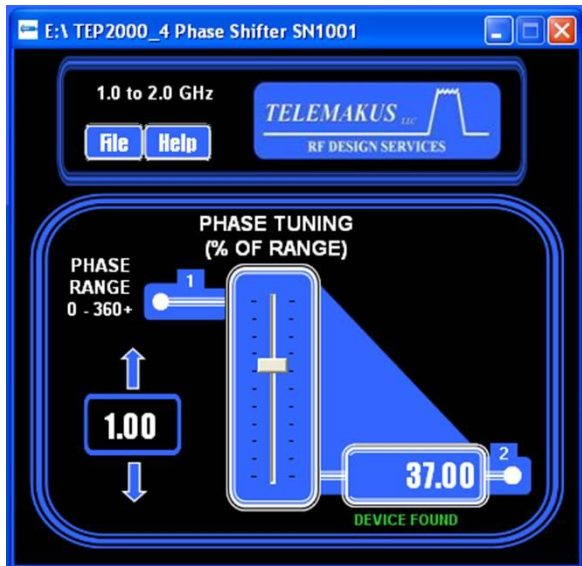
FEATURES

- Low Insertion Loss
- Window XP, 7 or 8 Supported
- 12 bit, 0.25 Degree Resolution
- Max Input +20dBm

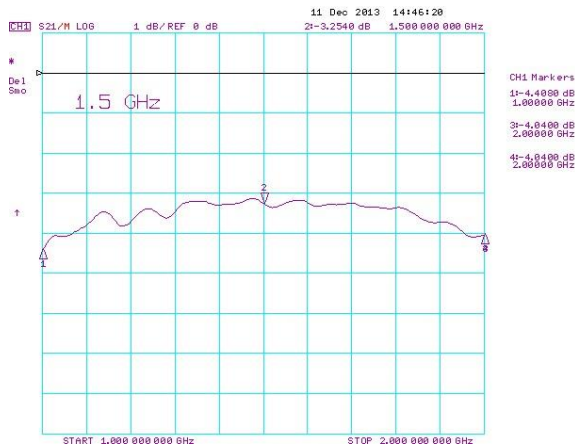


Phone: 916 458 6346
 Fax: 916 983 8713
 Email: mail@telemakus.com
 www.telemakus.com

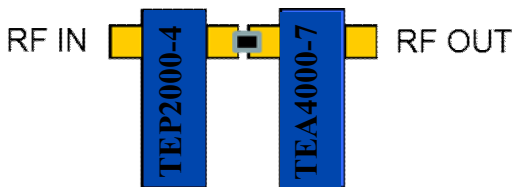
Primary Business Address
 13405 Folsom Blvd #502
 F O L S O M
 C A , 9 5 6 3 0



Easy to use graphical interface with both numeric entry and slider controls.



Insertion Loss



Typical Configuration
Gain/Phase Control



RF DESIGN SERVICES

TEP2000-4 Rev A Dec 2013

Ordering information

Model	Frequency	Phase Control Range Typ	Max Input
TEP2000-4	1 to 2 GHz	400 Deg	+20dBm
TEP4000-5	2 to 4 GHz	460 Deg	+20dBm
TEP8000-6	4 to 8 GHz	410 Deg	+20dBm
TEP12000-6	8 to 12 GHz	390 Deg	+20dBm
TEP18000-6	12-18GHz	380 Deg	+20dBm

Specifications

Parameter	Specification
Frequency Range	1 GHz to 2GHz
Phase Control Range	360 Degrees Min / 400 Degrees Typ
Interface	USB 2.0
Current	150mA (From USB interface)
Step Size	0.25 Degrees Max / 0.1 Degrees Typ
Input IP3	+30dBm IIP3
Max input for linear operation	+6dBm
Insertion Loss	4dB Typ /6dB Max @2GHz
RF Connectors	SMA Male/Female
USB Connector	Mini A

Environmental

Temperature Range	-40 to +55 degC		
Not Environmentally sealed			

Phone: 916 458 6346
 Fax: 916 983 8713
 Email: mail@telemakus.com
 www.telemakus.com

Primary Business Address
 13405 Folsom Blvd #502
 Folsom
 CA,95630