

DESCRIPTION

The TEG1000-10 is a Laboratory quality, Synthesized RF Signal Source with 10dBm Output Power

The TEG1000-10 is the smallest USB microwave synthesized source available and is also priced significantly below the current market offerings.

The source can be swept between any two frequencies in its specified range with selectable step size as low as 1KHz.

Applications include: LO for frequency conversion, Signal Source for Scalar measurements; two or more can be combined for multi-tone testing .

Use of the optional HUB allows the source to remain in a given state even after the host PC is removed from the system.

The synthesized source also contains 0.5GB of flash memory used for installation files, test data and other supporting documentation. Drivers, utilities and documentation are available on the source itself.

CALIBRATION

Full Results of factory test data are stored in each units in Flash memory and available through the USB interface.



RF DESIGN SERVICES



TEG1000-10

Rev A Dec 2009

BENEFITS

Synthesized RF Source

USB 2.0 Interface

700MHz to 1000MHz



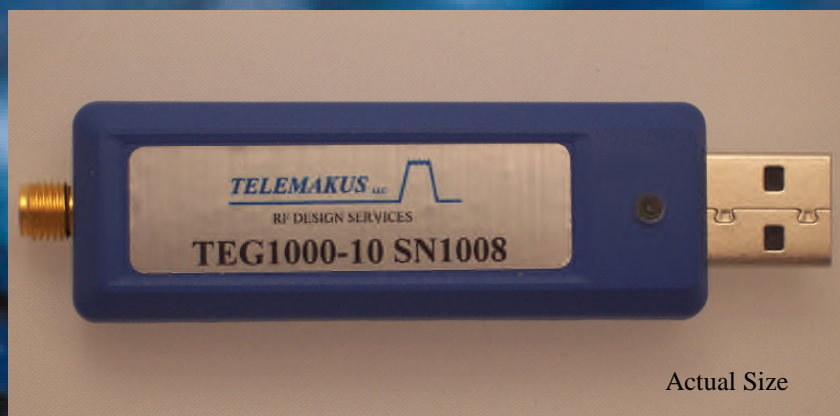
FEATURES

+10dBm Output

PC Software supported

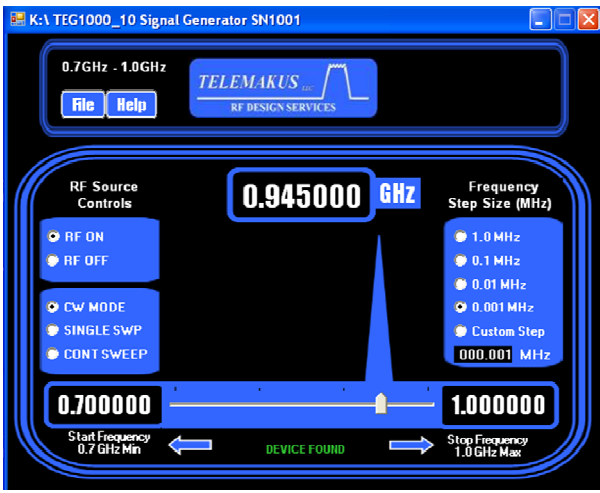
Internal 10MHz Xtal Ref

-105dBc/Hz phase noise @100KHz

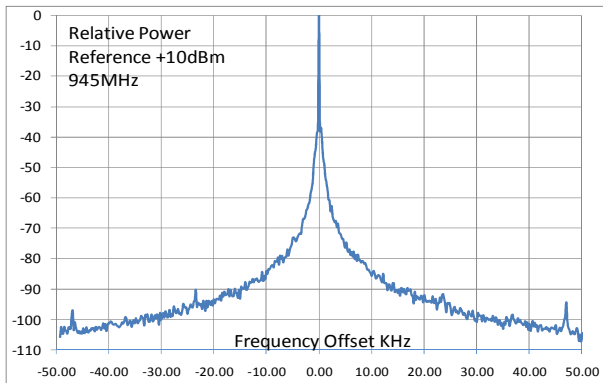


Phone: 916 458 6346
Fax: 916 983 8713
Email: mail@telemakus.com
www.telemakus.com

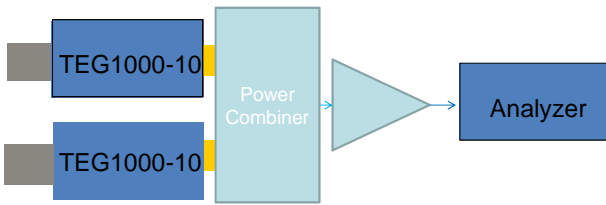
Primary Business Address
13405 Folsom Blvd #502
F O L S O M
C A , 9 5 6 3 0



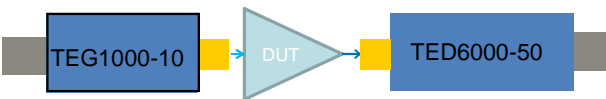
Easy to use graphical interface with both numeric entry or slider controls.



Typical Phase Noise



Two tone Testing



Scalar Measurements

Typical Configurations



RF DESIGN SERVICES



TEG1000-10 Rev A Dec 2009

Ordering information

Model	Frequency	Typ. Output Power	Phase Noise
TEG1000-10	700MHz to 1GHz	+10dBm	-105dBc@100KHz
TEG2700-6	1.8GHz to 2.7GHz	+10dBm	-105dBc@100KHz

Other frequency ranges available, please consult factory

Specifications

Parameter	Specification
Freq Range	700MHz to 1000MHz
Internal Ref	10MHz (2.5 ppm over temp)
Interface	USB 2.0
Current	150mA @5V Vbus USB
Step Size	Programmable, 1KHz resolution
Phase Noise	-105dBc/Hz @100kHz
Spurious	-80dBc
Harmonics 2nd, 3rd	-20dBc, -15dBc
Power Output	+10dBm min
Pout Control	ON/OFF
RF Connectors	SMA Female
USB Connector	Mini A

Environmental

Temperature Range	-40 to +55 degC		
Not Environmentally sealed			

Phone: 916 458 6346
 Fax: 916 983 8713
 Email: mail@telemakus.com
 www.telemakus.com

Primary Business Address
 13405 Folsom Blvd #502
 Folsom
 CA, 95630