

DESCRIPTION

The TED8000-40 is a Laboratory-quality, True RMS power meter with USB interface. The RF power is measured using a IC log detector and provides accurate RMS power over a 50 dB dynamic range. Models are available from 50MHz to 8GHz. The device is powered from the USB interface and the power is read by a free utility running on any XP, Vista or Windows 7 PC.

The  $\mu$ Meter is the smallest USB power meter available and is also priced significantly below the current market offerings.

Applications include basic power measurement but also data logging for life test or system performance monitoring were the device needs to be left unattended for long periods. The optional HUB allows the  $\mu$ Meter to continue to make measurements after the host PC is removed from the system.

The uMeter also contains 0.5GB of flash memory used for calibration tables but also available for file storage and data logging. All drivers, utilities and documentation are available on the uMeter itself.

CALIBRATION

Calibration is performed at the factory and cal tables are loaded in Flash. Custom calibration tables can be loaded if greater accuracy is required at a specific frequency. No zeroing or cal standards required. Temperature correction is achieved using internal temperature sensor, also available to the user.



RF DESIGN SERVICES



# TED8000-40 Rev A Feb 2012

BENEFITS

40dB Dynamic Range

USB interface

50MHz to 8GHz

FEATURES

True RMS Accuracy

PC Software supported

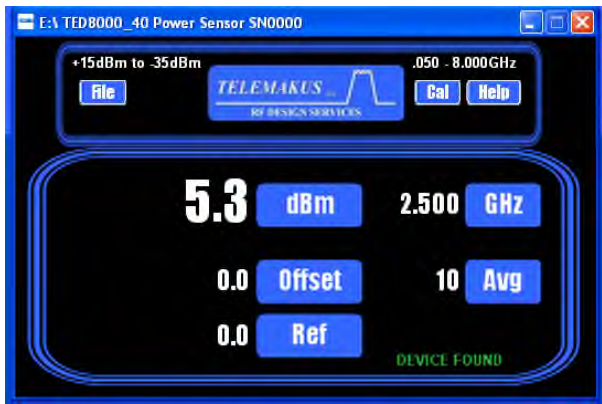
0.5dB Accuracy

Max input +20dBm

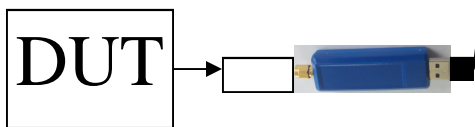
Add Picture

Phone: 916 458 6346  
Fax: 916 983 8713  
Email: mail@telemakus.com  
www.telemakus.com

Primary Business Address  
13405 Folsom Blvd #502  
F O L S O M  
C A , 9 5 6 3 0



Add improved image



Typical Configuration



# TED8000-40 Rev A FEB 2012

## Ordering information

Model	Frequency	Max Input
TED8000-50	50MHz to 8GHz	+20dBm
TED6000-50	50MHz to 6GHz	+20dBm

## Specifications

Parameter	Specification
Freq Range	50MHz to 8GHz
Dynamic Range 50-6000MHz	50dB
Dynamic Range 6000-8000MHz	40dB
Interface	USB 2.0
Current	150mA @5V
Accuracy	+/-0.5dB
Sample Rate	10Hz
RF Input Connector	SMA Male
USB Connector	Mini A

## Environmental

Temperature Range	-40 to +55 degC
Not Environmentally sealed	

Phone: 916 458 6346  
 Fax: 916 983 8713  
 Email: mail@telemakus.com  
 www.telemakus.com

Primary Business Address  
 13405 Folsom Blvd #502  
 Folsom  
 CA, 95630